

LCR CHECKER



Model
SD-FPLCR-DN1

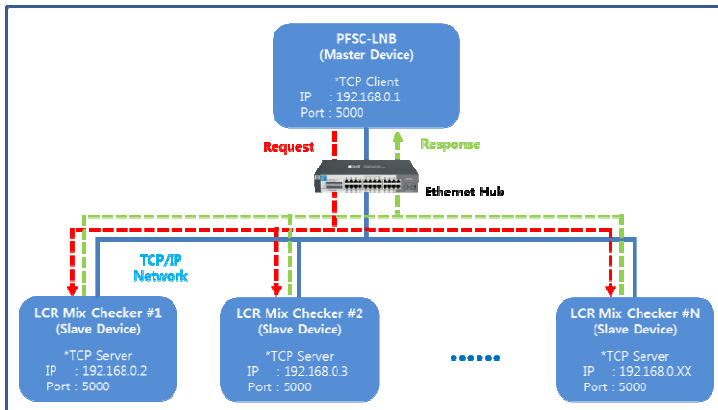
LCR Measurement for Component Mounting



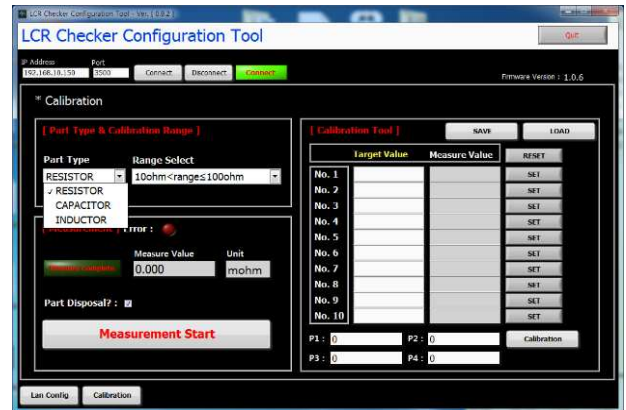
■ General Specification

Model ID	LCR CHECKER
Model No	SD-FPLCR-DN1
Test Range	Chip Inductor = 1nH ~ 120uH MLCC(Multilayer Ceramic Chip Capacitors) = 0.5pF ~ 120uF Chip Resistor = 0.1Ω ~ 120MΩ
Test Size	0.6(L) X 0.3(W) X 0.15(T) ~ 3.2(L) X 1.6(W) X 1.5(T)(mm)
Test Cycle Time	Within 1 sec
Electric Source	Typ. DC 24V / 5W, Peak 7W (Using Mounter Power) Hot Swap Controller Included
Protocol	Ethernet TCP/IP Multiple units can move simultaneously.
Dimensions	W 633(mm) X H 113.5(mm) X D 20(mm)
Weight(Approx.)	2.2kg

■ Features

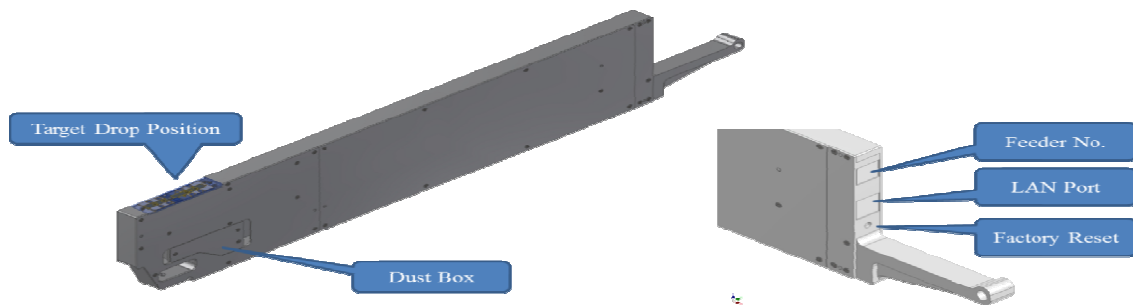


< Multiple units Shall be move simultaneously >

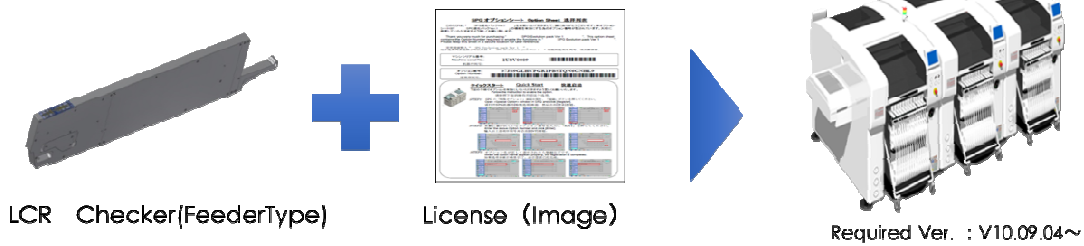


< Easy calibration >

■ Configurations



LCR Checker(License) : Necessary for each machine



Inquiries



4F, KyoungRim B/D, 7, Hwangsaeul-Ro
359Beon-Gil, Bundang-Gu, Seongnam-Si,
Gyeonggi-Do, 13590 Korea
TEL : (031)698-2388 FAX : (031)698-2399
E-Mail : create@omnicreate.co.kr
Homepage : www.omnicreate.co.kr

Inquiries



4-6, Kandasurugadai , Chiyoda-ku,
Tokyo , 101-8222 JAPAN
TEL : (03)6370-8680 FAX : (03)6370-8605
E-Mail : lcr@djk.co.jp
Homepage : www.djk.co.jp
P.I.C Mr.Aoki , Mr.Kotusgai